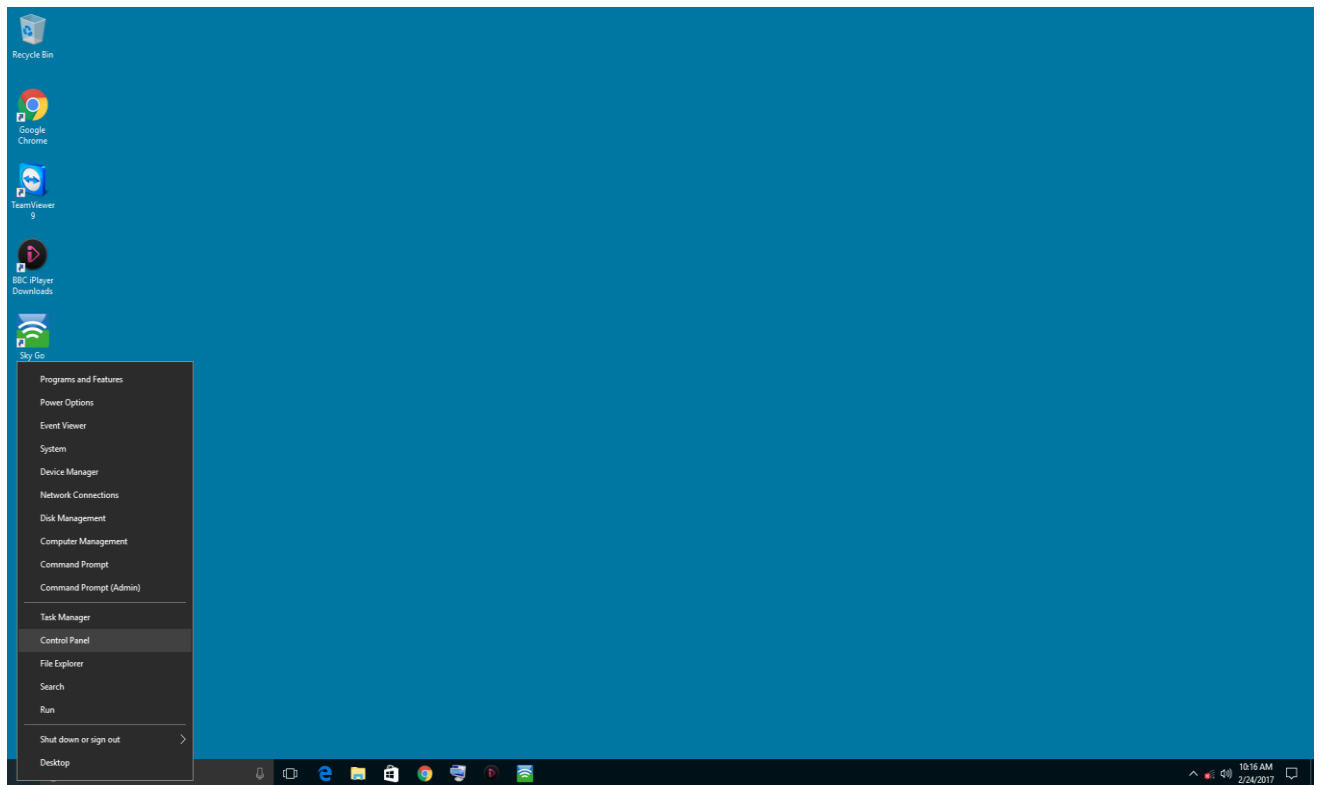


Sonixnet

How to connect your Window 10 computer to the internet using PPPOE connection

Note if you find the figures too small to view, you can enlarge by using the zooming option on the right hand corner of this word page. It should be on 100%, zoom in more!

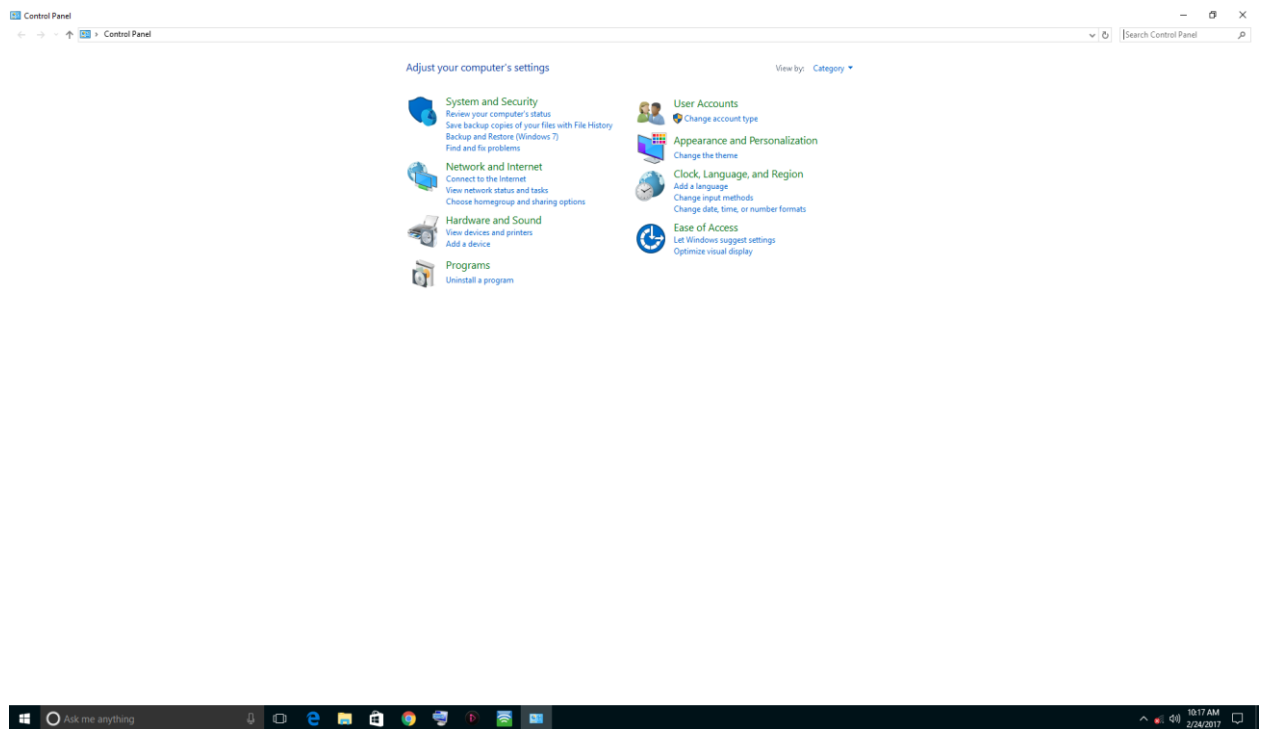
Step 1: Creating a new connection



(Fig.1)

✧ **Right click** the Start menu > click **Control Panel**

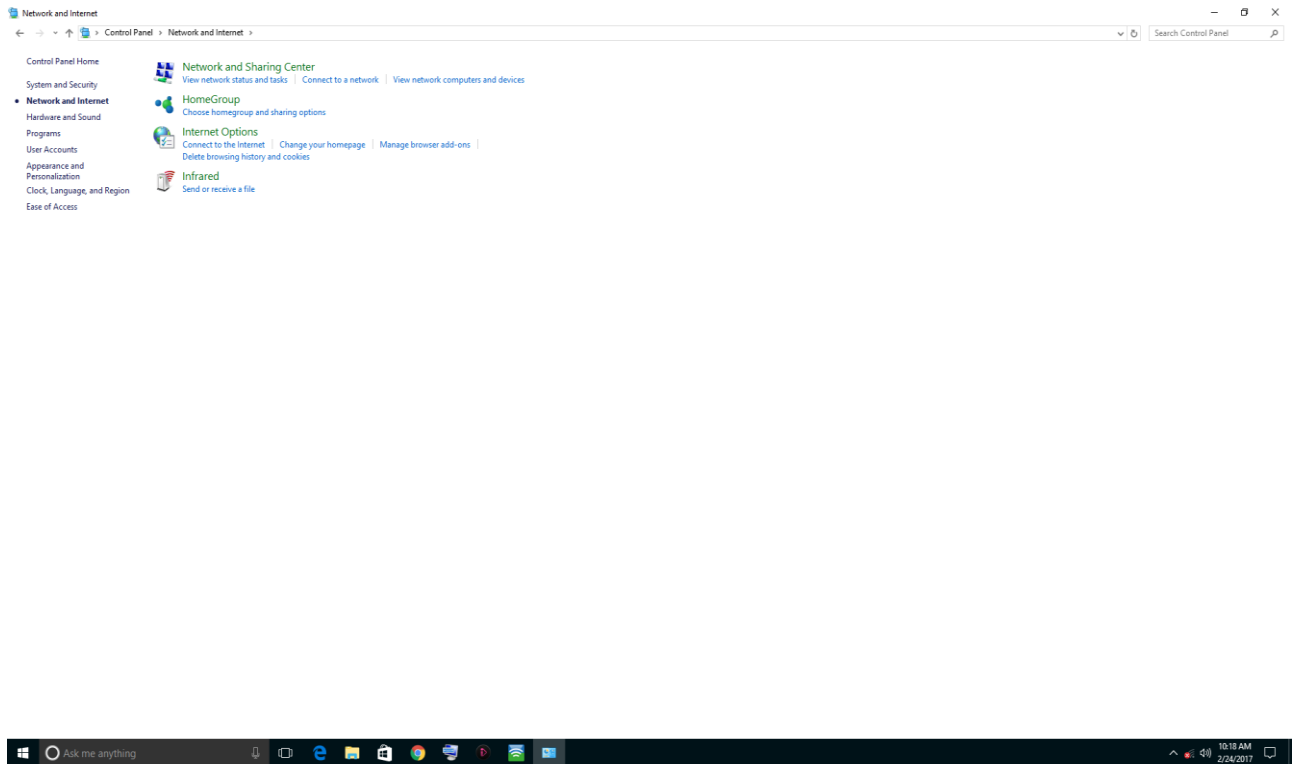
Step 2: Control panel



(Fig.2)

- ✧ Once you have opened up the **control panel** page you will see a number of options.
- ✧ Click on **Network and Internet**

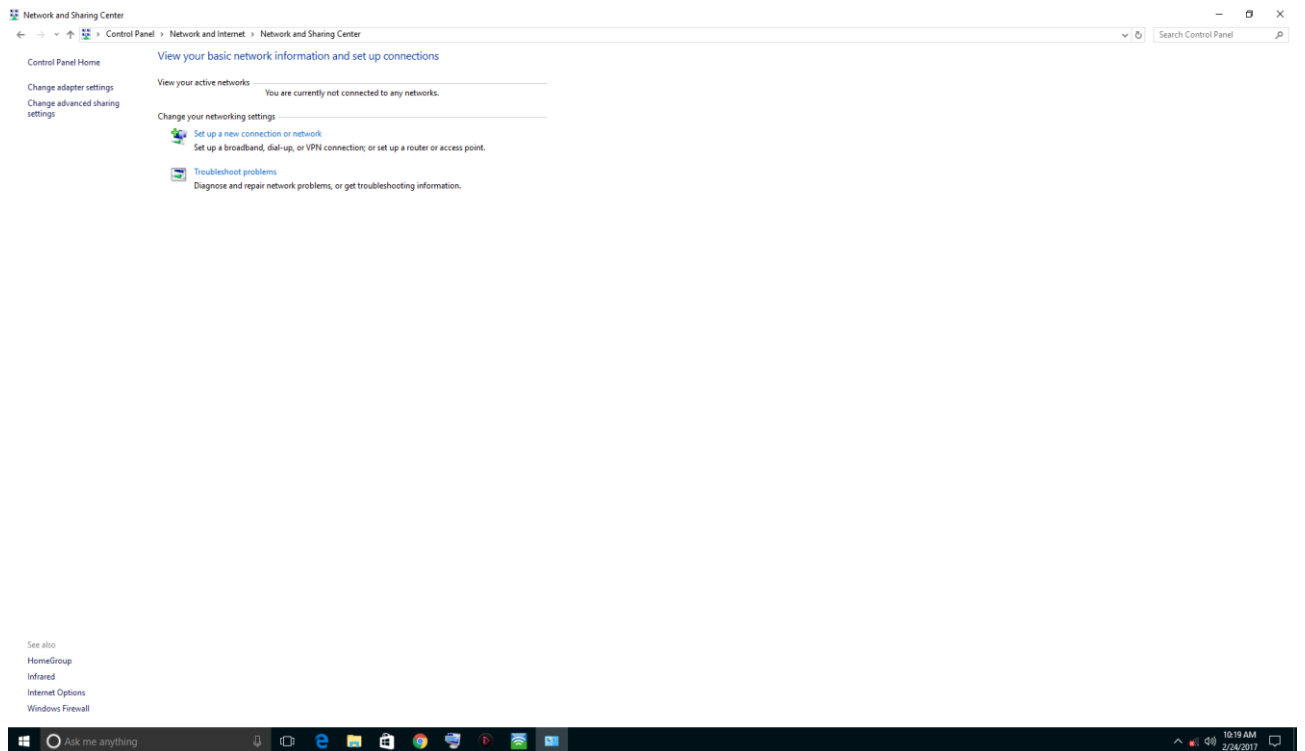
Step 3: Network and Internet



(Fig.3)

- ✧ Again, there will be a number of options
- ✧ Click on **Network and Sharing Center** at the very top.

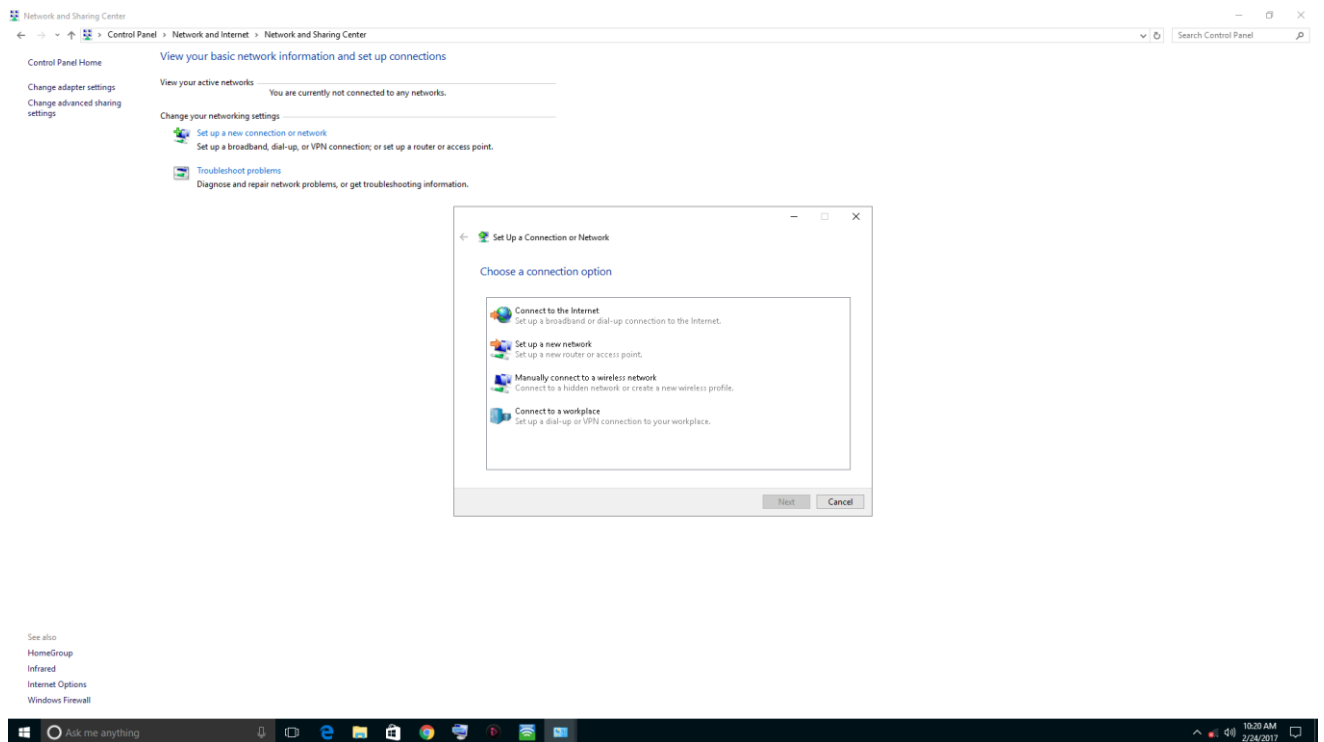
Step 4: Network and Sharing Centre



(Fig. 4)

- ✧ Under **Change Your Network settings** there will be two options.
- ✧ Click on **Set up a new connection or network**

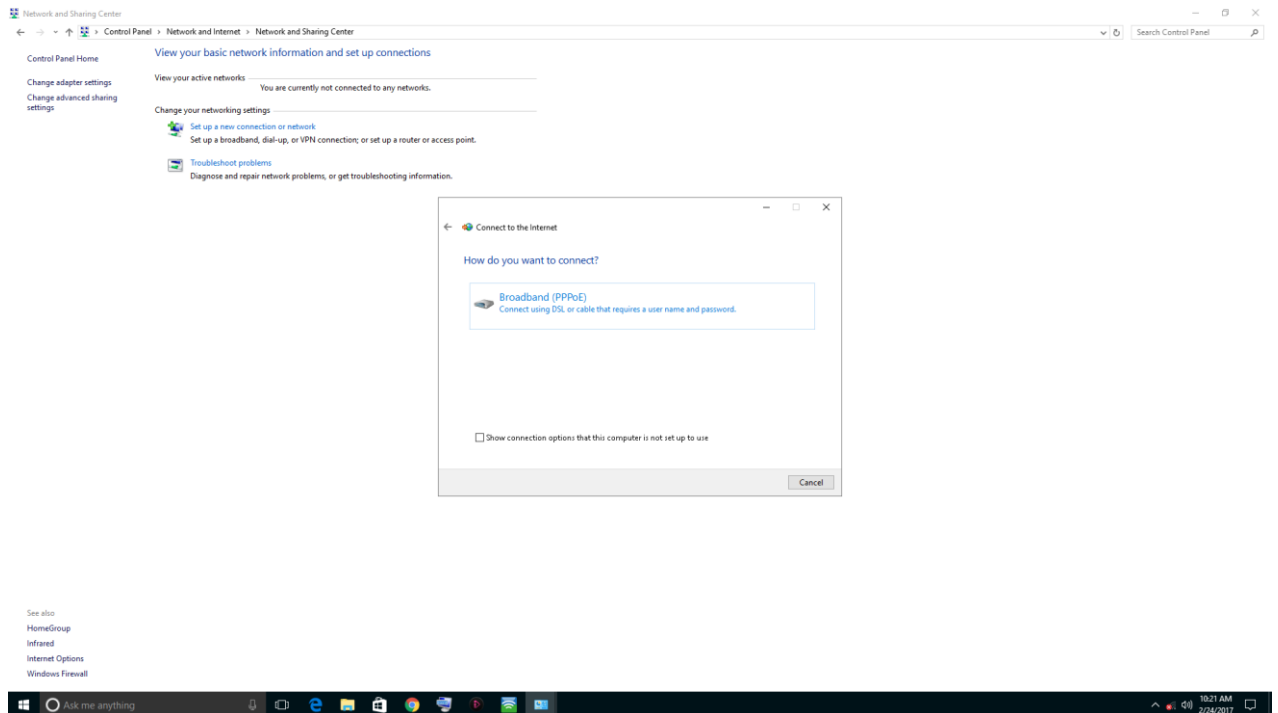
Step 5: Set up a connection or network



(Fig.5)

- ✧ An option bar should open. (As Above)
- ✧ Out of the 4 options, click the one on top **Connect to the Internet**, and **Next**

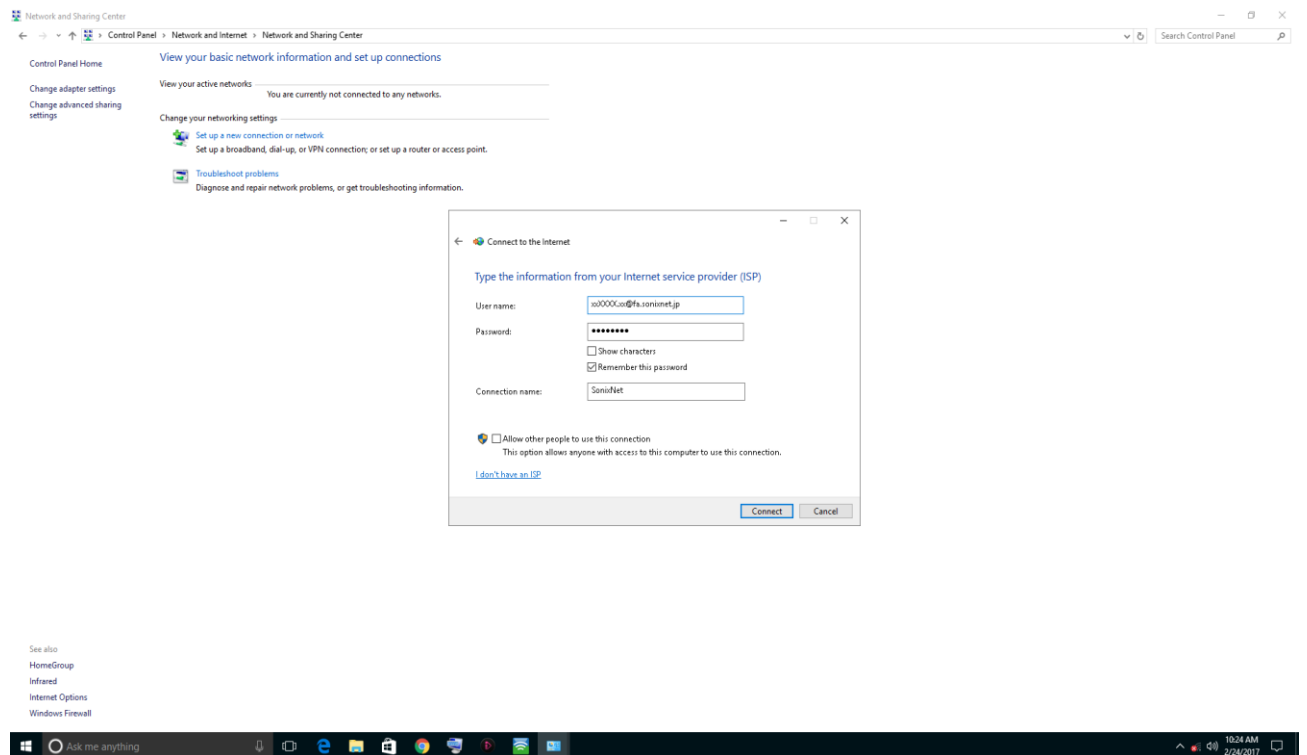
Step 6: Connect to the internet



(Fig. 6)

- ✧ The option bar will be as above. **How do you want to connect?**
- ✧ Click on the **Broadband (PPPoE)**

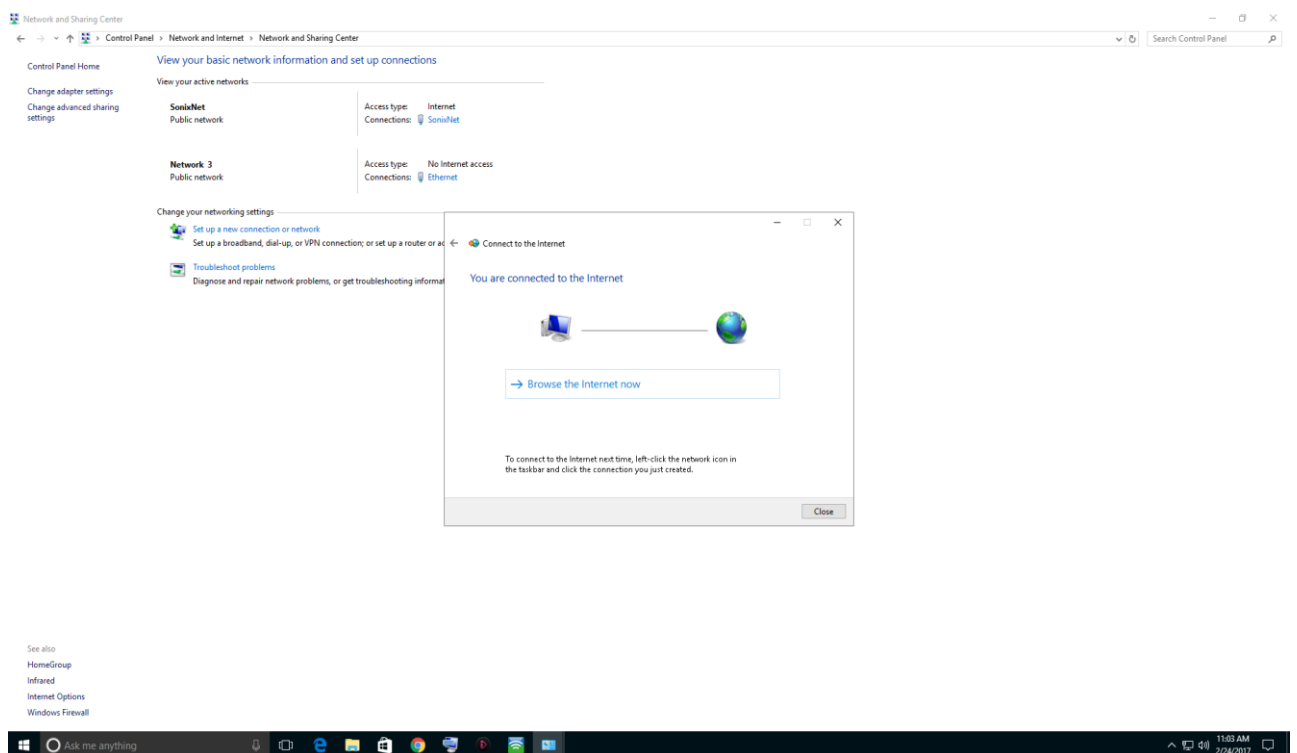
Step 7: Connect to the internet part 2 (ISP)



(Fig. 7)

- ✧ Type in your **Username and Password** (see our email for your username and password)
- ✧ Click on **remember the password**
- ✧ Type in **SonixNet** in the **connection name**

Step 8: You Are Connected to the Internet! Finished!



(Fig. 8)

- ✧ Wait briefly for the internet to connect
- ✧ After it is connected, it will come up as above

**** DONE! Have fun surfing the internet!**